

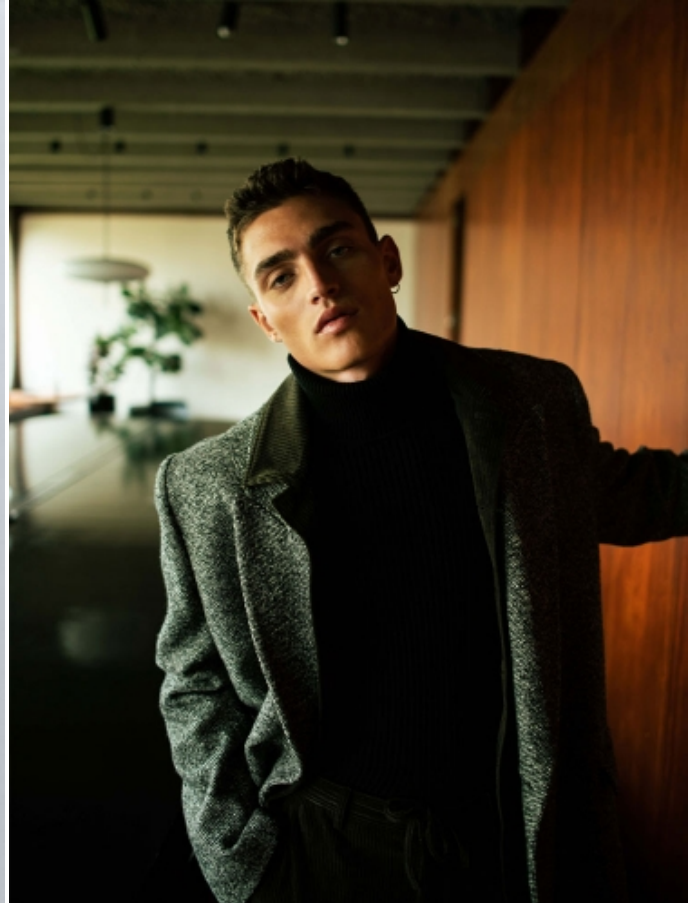
SERGIO AMORE

HEIGHT: 6'2" / 188 CM CHEST: 36" / 93 CM WAIST: 28" / 72 CM HIPS: 36" / 93 CM SHOES: 13 US / 46 EU HAIR: LIGHT BROWN / CASTAÑO CLARO EYES: BLUE / AZULES



SERGIO AMORE

HEIGHT: 6'2" / 188 CM CHEST: 36" / 93 CM WAIST: 28" / 72 CM HIPS: 36" / 93 CM SHOES: 13 US / 46 EU HAIR: LIGHT BROWN / CASTAÑO CLARO EYES: BLUE / AZULES



SERGIO AMORE

HEIGHT: 6'2" / 188 CM CHEST: 36" / 93 CM WAIST: 28" / 72 CM HIPS: 36" / 93 CM SHOES: 13 US / 46 EU HAIR: LIGHT BROWN / CASTAÑO CLARO EYES: BLUE / AZULES



SERGIO AMORE

HEIGHT: 6'2" / 188 CM CHEST: 36" / 93 CM WAIST: 28" / 72 CM HIPS: 36" / 93 CM SHOES: 13 US / 46 EU HAIR: LIGHT BROWN / CASTAÑO CLARO EYES: BLUE / AZULES



SERGIO AMORE

HEIGHT: 6'2" / 188 CM CHEST: 36" / 93 CM WAIST: 28" / 72 CM HIPS: 36" / 93 CM SHOES: 13 US / 46 EU HAIR: LIGHT BROWN / CASTAÑO CLARO EYES: BLUE / AZULES

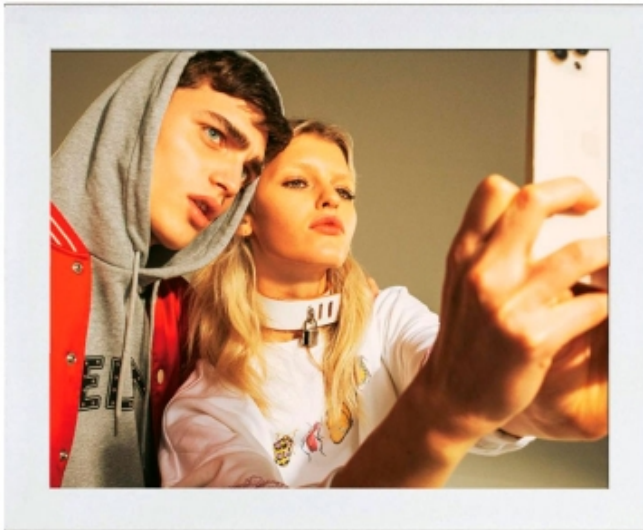


SERGIO AMORE

HEIGHT: 6'2" / 188 CM CHEST: 36" / 93 CM WAIST: 28" / 72 CM HIPS: 36" / 93 CM SHOES: 13 US / 46 EU HAIR: LIGHT BROWN / CASTAÑO CLARO EYES: BLUE / AZULES



IMPERMEABILE EFFETTO LEONARDO (VICTORIA BECKHAM): SU BODY IN TULLE RICAMATO (INTRISSIMI) E PANTALONI (KODCO, € 90). BRACCIALE (CELINE BY HEDI SLIMANE), PER LUI: FELPA (€ 69,90) E JEANS (€ 119,90, TUTTO GUESS JEANS); CAPPELLO (RAT HAT), CALZE E SANDALI ATLAS (TUTTO GIORI). PAGINA ACCANTO: BRALETTE IN DENIM CON FASCIA A BORRICHIE (GAËLLE PARIS, € 119); SU HOT PANTS IN GABARDINE STAMPATO (€ 470), ORECCHINI A GOCCIA (€ 450, TUTTO ALESSANDRA RICH), CIUSAPADES ESALÉ (STELLA MCCARTNEY, € 890).



FELPA (BEST COMPANY, € 75), COLLARE (PURET ILVA, € 100 CA.); PER LUI: BLOUSON E FELPA (TUTTO CELINE HOMME BY HEDI SLIMANE). PAGINA ACCANTO: FELPA (GUESS ACTIVEWEAR, € 69,90) E GONNA (ALÁÁ); ORECCHINI E CINTURA (TUTTO ALEXANDER MCQUEEN). CALZE (ARIES), SANDALI (ALESSANDRA RICH); LA MODELLA: ELODIE CHRIST@MONSTER MANAGEMENT. IL MODELLO: SERGIO AMORE@IMG. MODELS: TRUCCO: ALESSANDRA CASONI@FREELANCER USING GIORGIO ARMANI BEAUTY LUMINOUS SILK FOUNDATION. PENTTURE: MAURIZIO KILPHER@ETOLE MANAGEMENT.



SERGIO AMORE

HEIGHT: 6'2" / 188 CM CHEST: 36" / 93 CM WAIST: 28" / 72 CM HIPS: 36" / 93 CM SHOES: 13 US / 46 EU HAIR: LIGHT BROWN / CASTAÑO CLARO EYES: BLUE / AZULES

