

TOM WEBB

HEIGHT: 6' 4" / 193 CM CHEST: 40" / 102 CM WAIST: 31" / 79 CM HIPS: 38" / 99 CM SHOES: 14 US / 47 EU HAIR: DARK BLOND / RUBIO OSCURO EYES: BLUE / AZULES



TOM WEBB

HEIGHT: 6' 4" / 193 CM CHEST: 40" / 102 CM WAIST: 31" / 79 CM HIPS: 38" / 99 CM SHOES: 14 US / 47 EU HAIR: DARK BLOND / RUBIO OSCURO EYES: BLUE / AZULES



BRIGHT FOR HER & SOBOLD FOR HIM
THE NEW FRAGRANCES

TOM WEBB

HEIGHT: 6' 4" / 193 CM CHEST: 40" / 102 CM WAIST: 31" / 79 CM HIPS: 38" / 99 CM SHOES: 14 US / 47 EU HAIR: DARK BLOND / RUBIO OSCURO EYES: BLUE / AZULES

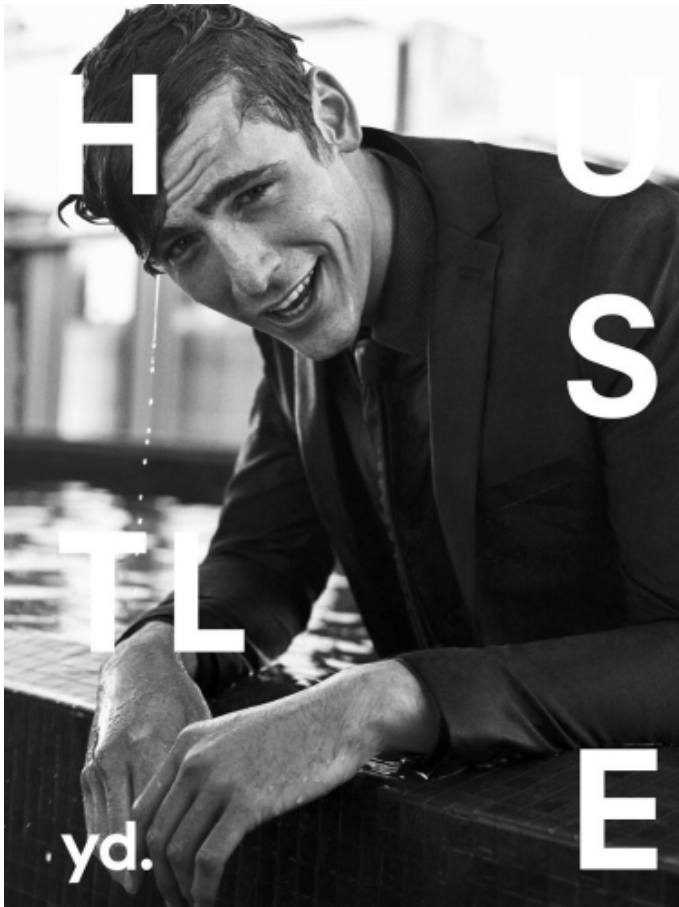


HERNO LAMINAR

Italian outerwear label Herno, which started out making raincoats in 1948, offers a diverse WW of understated coats and jackets. The Laminar line takes this to new levels by producing a range of coats that combines effortless style and quality with absolute practicality. Which is why it most certainly deserves a spot in your wardrobe.

COAT BY HERNO LAMINAR 744749, BLAZER 707193, TIE 707238 BOTH BY ERMENEGILDO ZEGNA, SHIRT BY BALENCIAGA 385099

48 / 43



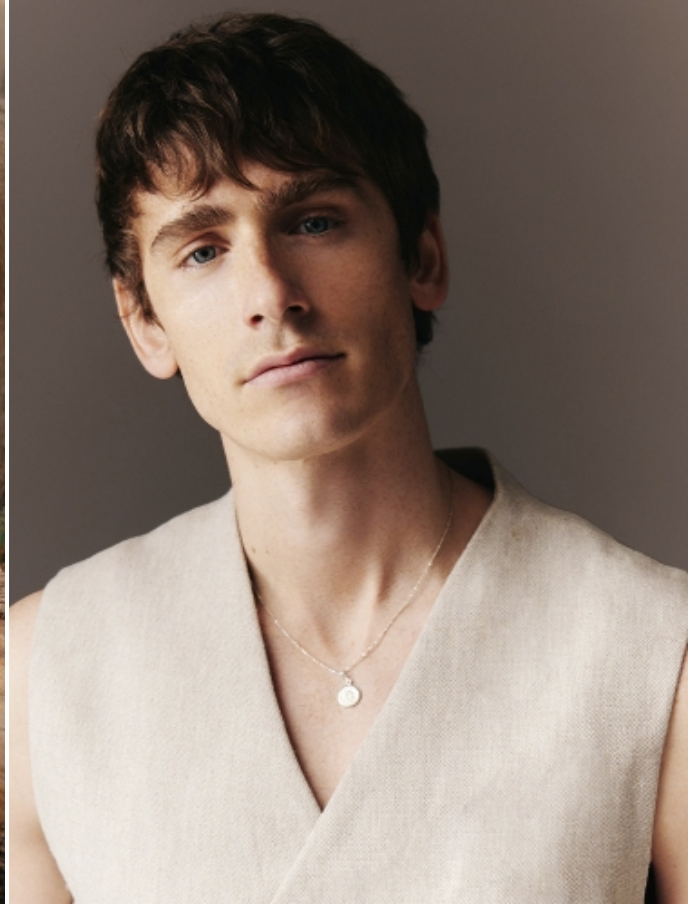
TOM WEBB

HEIGHT: 6' 4" / 193 CM CHEST: 40" / 102 CM WAIST: 31" / 79 CM HIPS: 38" / 99 CM SHOES: 14 US / 47 EU HAIR: DARK BLOND / RUBIO OSCURO EYES: BLUE / AZULES



TOM WEBB

HEIGHT: 6' 4" / 193 CM CHEST: 40" / 102 CM WAIST: 31" / 79 CM HIPS: 38" / 99 CM SHOES: 14 US / 47 EU HAIR: DARK BLOND / RUBIO OSCURO EYES: BLUE / AZULES



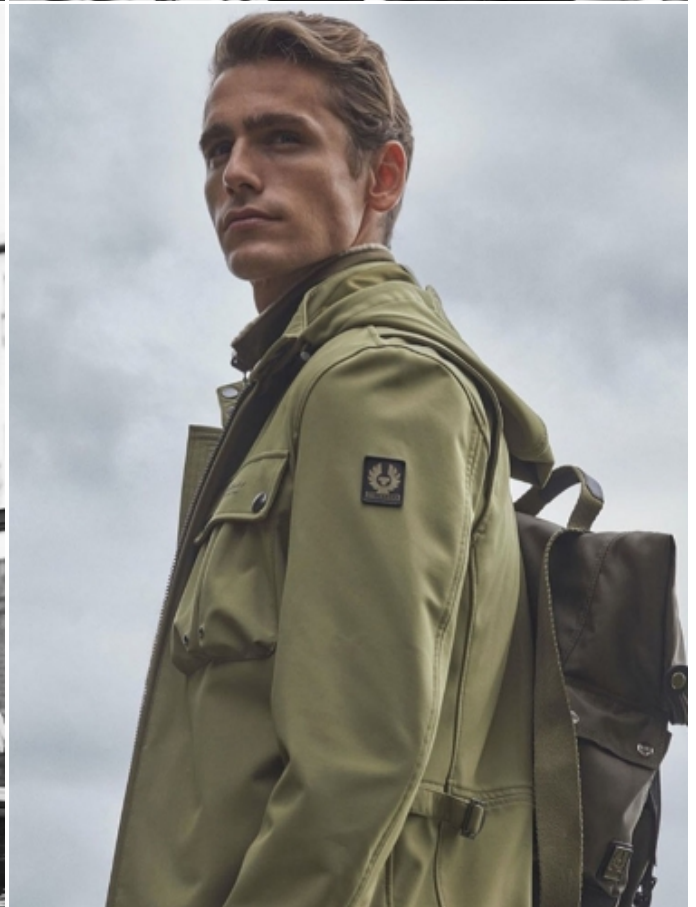
TOM WEBB

HEIGHT: 6' 4" / 193 CM CHEST: 40" / 102 CM WAIST: 31" / 79 CM HIPS: 38" / 99 CM SHOES: 14 US / 47 EU HAIR: DARK BLOND / RUBIO OSCURO EYES: BLUE / AZULES



TOM WEBB

HEIGHT: 6' 4" / 193 CM CHEST: 40" / 102 CM WAIST: 31" / 79 CM HIPS: 38" / 99 CM SHOES: 14 US / 47 EU HAIR: DARK BLOND / RUBIO OSCURO EYES: BLUE / AZULES



TOM WEBB

HEIGHT: 6' 4" / 193 CM CHEST: 40" / 102 CM WAIST: 31" / 79 CM HIPS: 38" / 99 CM SHOES: 14 US / 47 EU HAIR: DARK BLOND / RUBIO OSCURO EYES: BLUE / AZULES

